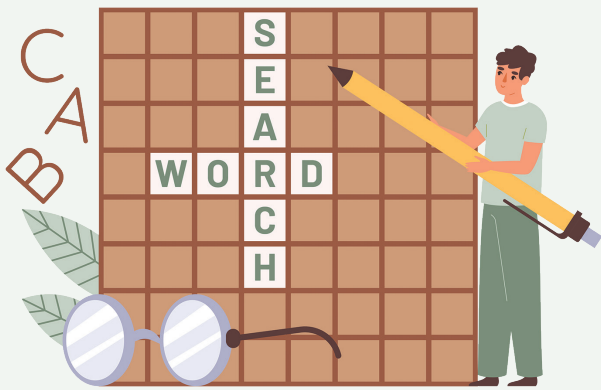
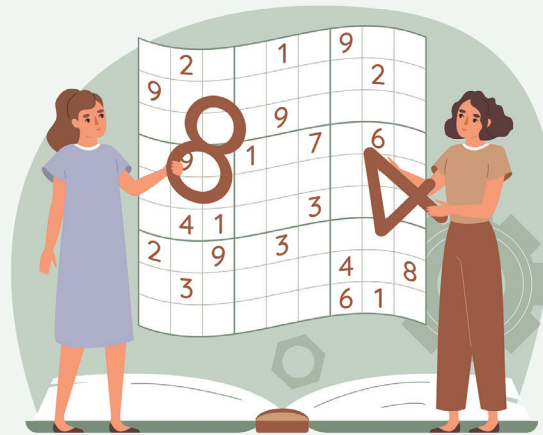


including **WORD SEARCHES** from local businesses



### ANSWER KEYS found on the last three pages

T HFUA NAQSOQGFZJ  
 YKX DBTD TODAY XKD  
 VFHAZD VOZAV DBXK JBD  
 XSD DBAGVAHUAV TV  
 Z QV FZ GFGA



SPONSORED BY:

**SHERMAN'S**  
 MAINE COAST BOOK SHOPS

**INSTRUCTIONS**

**- WORD SEARCHES -**

Find the words listed in each word search. Words and phrases may appear right to left, left to right, vertically top to bottom or bottom to top, as well as diagonally top to bottom or bottom to top.

**- CRYPTOQUOTES -**

**AXYDLBAAXR** is **LONGFELLOW**  
One letter stands for another. In this sample, A is used for three L's, X for the two O's, etc. Single letters, apostrophes, and length and formation of words are all hints.

**- CRYPTOQUIPS -**

The Cryptoquip is a substitution cipher in which one letter stands for another. If you think that X equals O, it will equal O throughout the puzzle. Single letters, short words and words using an apostrophe give you clues to locating vowels. Solution is by trial and error.

**PAT'S PIZZA SCARBOROUGH**

M R X H J A Z S C A R B O R O U G H H Q  
 Y V P Y N A H A T C I S U M E V I L U W  
 I E T D M N Q J A Z X Z Y P O U J S A E  
 I Y M A R D Z K C N J L V Q A Z D A D E  
 K W U I S A V B W W F M Q T Z O H L R P  
 I B B L U T B D W I N G S Z N J T A N O  
 H H B Y S C E S A J W A F R I E N D L Y  
 S B Z S S T O I T H P D M M X R V K Z K  
 R E V P Y C A L T R I V I A N I G H T J  
 E T H E O U F F D A O H N N P N H W D Z  
 Z Y M C A H F R Q S L P G I N Q X E C Q  
 I L B I I Q O N Q O A I S T G E F P B D  
 T I A A U W R A F K R N A A U N R W P P  
 E M B L R C D Q Y O P X D N G O Z S I L  
 P A X S C E A N V U X X D W S I E K Z L  
 P F N L N H B S A I F Q P T I P B K Z N  
 A A P C Q C L R U S Q L V Y U C I C A I  
 H R F B N H E E V A T D C C A W H Q G T  
 S B O N P K K C R P L O F F D I N E I N  
 Q Y Q J T E V P H L G Z H B F W N Z S T

- AFFORDABLE
- APPETIZERS
- BIG A SPORTS BAR
- CASUAL
- COLD SANDWICHES
- DAILY SPECIALS
- DINE IN
- DINNERS
- FAMILY
- FRIENDLY
- HOT SANDWICHES
- ITALIANS
- LIVE MUSIC
- PASTA
- PIZZA
- SALAD
- SCARBOROUGH
- TAKE OUT
- TRIVIA NIGHT
- WINGS

*Created with TheTeachersCorner.net Word Search Maker*

**CRYPTOQUOTE**

ZTDFK DF BH QBJT PKETF FPEF  
 KMKTQ YEQ DI FPK NKIF YEQ DH  
 FPK QKET. -TEUVP ZEUYB KLKTIBH

**SUDOKU**

**INSTRUCTIONS**

**- SUDOKU -**  
Enter numbers in the empty squares so that the numbers 1-9 appear only once in each row, column and box.

4	9		8	6	2	5	7	1	
		7		3				9	
	2	8	5	7				3	
7	4				6			5	
	8				7				
3			9	4	8	2	1		
8			2	1					
2	7	4				3	1	8	5
			7				4		

See answer keys on **LAST THREE PAGES**



*In the heart of the Scarborough Community since 1985*

**FAMILY DINING**  
Daily Specials • Happy Hour

**PatsPizzaScarborough.com**

209 U.S. Route 1 • Scarborough  
Open 7 Days A Week

**Call 207-883-8441 For Pat's-To-Go**



**Best Sports Coverage in the Area**

**Dine-In | Take-Out | NFL Sunday Ticket | Tuesday Trivia | Live Music: Weds, Thurs & Sat.**

# YOUR MEDICARE!

A Q E F F C Y I N L C W K Z O G K X T I  
 S Q F G S Z L O B F T I X B U O B I N Q  
 P V U D A A R B L C M B M I E V X N H O  
 R Z I C Y R V J Y X O I D R S R N O W D  
 O G F N F I E F R B V A E S D I J I H U  
 V N E G Q Y Z V G P N J I T G G R T N U  
 I I S A R Y G O O C U N L N Y F U A J I  
 D R O U V E L B E C A O D E Q I K C Q W  
 E A U O P D A Z Z R T I A M Y Q P I V I  
 R E I A M P H T O C N S B L L O G D T Y  
 F H A A D A L G O F T I M L T L B E C Y  
 U O N R K V T E S Q I V N O L O X M W S  
 V T W B X E A V M O M T O R N P Q S E F  
 J H S O Q C X N C E O Y N N Z D D C P H  
 Q H I U A X T B T B N S B E A Y I R Q O  
 Z S P U Y P D X B A L T S X S O W G D C  
 R V I D X Y O U R A G E N T H S Y N U C  
 C H D Y S E R V I C E E L C B A J I M F  
 A O R A R X X O Q L C I I X F U I D E T  
 X Z A W R H L M Y W G M R G T Z C W Z X

- ADVANTAGE
- BOB GOLDMAN
- CHOICES
- CMS
- COVERAGE
- ENROLLMENT
- FITNESS
- GREAT SERVICE
- GUIDANCE
- HEARING
- MEDICATION
- PROVIDER
- SUPPLEMENT
- VISION
- YOUR AGENT

Created with TheTeachersCorner.net  
 Word Search Maker

## CRYPTOQUOTE

DTX EDDM RFNSKXTZ LU CDGZW H  
 ZWDFUHTN WHUZV EDFTUXMU. ZWX  
 ZWLTS ZD ND LU ZD UFQQMV MLSWZ  
 HTN TDZ WXHZ. - CDDNGDC CLMUDT

## SUDOKU

2	9		1	8	3	6		4
8					6			2
3	7	6		4		1	9	8
				5	1	8		
	3	1	7			9	6	5
	5	8	6			2		
6					5		8	
			8			5		6
	8			6	7			1

CREATED With TheTeachersCorner.net

Instructions for puzzles on Page 02

See answer keys on LAST THREE PAGES



## Smooth Sailing for *YOUR* Medicare™

I represent a variety of excellent Medicare health plans. With over 16 years of experience, I can help you select and enroll in the right plan for you. Helping to make Medicare easy for folks in Maine, New Hampshire and Massachusetts.



**Robert Goldman**  
*Your Independent Licensed Agent*

**207-831-5929**

Not affiliated with the U.S. government or federal Medicare program

# SHERMAN'S MAINE COAST BOOK SHOPS

O O J S K A T I N G Z Q A J G P O J A O  
 G N A I T Y A Y Q F L E E C E X U P R Y  
 N A Z D G T E A R M U F F S N D E Q Q I  
 I U I I A S S D W U Z B B G X R R X O G  
 W Y C A C P A G N I L E V O H S A Z W Z  
 O B S Q B E U W X F L A G B C J I V B Z  
 L E N R D O F P H O T C H O C O L A T E  
 P Y H M B G N I D N A S L O X K Z Q Z C  
 Q U O N E R H E S T O O B Z W D X P O A  
 M J J S C N E I S H S S H A E B A W S L  
 V U G W Y N H A G M I T T E N S Y E Z P  
 X W N B T D W U D R J N D E C R A S Q E  
 T U O G Q G G E S I O S G N K X O X D R  
 F J L D X F E B L A N K E T S C K R Y I  
 X G B S E V O L G F M G C F I D A K B F  
 Q S E L Z Z U P R A T X H A D B P J V K  
 U O E B J S T A H O P H X F H C C T T F  
 C I H C T K C H I H T M C R V F S K T D  
 N B E H K S S H V B L E U Y R O P D A X  
 U L A K I H N U U S G O Y A P A V U Z L

- BLANKETS
- BOOTS
- EARMUFFS
- FIREPLACE
- FLEECE
- GLOVES
- HATS
- HOT CHOCOLATE
- ICE FISHING
- JACKETS
- JIGSAW
- LONG JOHNS
- MITTENS
- PLOWING
- PUZZLES
- READING
- SANDING
- SCARF
- SHOVELING
- SKATING

*Created with TheTeachersCorner.net  
 Word Search Maker*

## CRYPTOQUOTE

TDDVXO JUTO XVRXYV RZZVA.  
 EALPM OUVLA HLYMCUTMVC.  
 OTMV OUVLA YRNV. -JTYYG YTHK

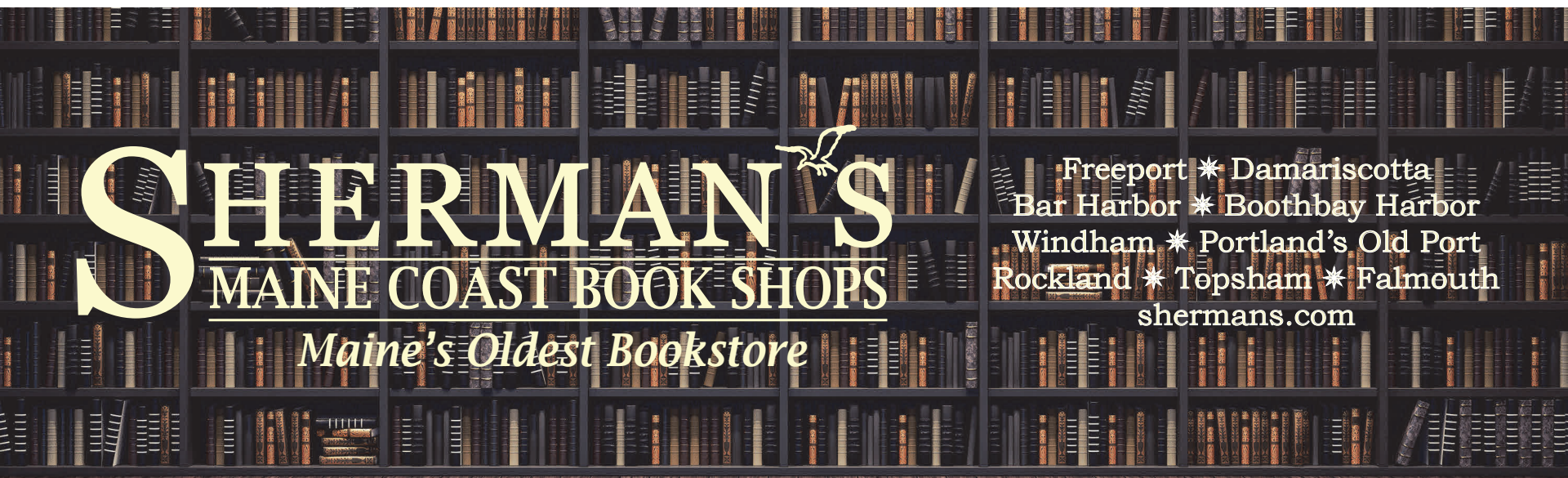
## SUDOKU

6				4	3			
2	8			3	4		1	
		4				5	6	
				2	1	9	3	
	3	1	5	8		2	6	
9		2		6	1	8	4	
			8		6	7		
			1		5	6	9	
1		6		3		5	8	4

CREATED BY www.theTeachersCorner.net

Instructions for puzzles on **Page 02**

See answer keys on **LAST THREE PAGES**



**SHERMAN'S**  
 MAINE COAST BOOK SHOPS  
*Maine's Oldest Bookstore*

Freeport \* Damariscotta  
 Bar Harbor \* Boothbay Harbor  
 Windham \* Portland's Old Port  
 Rockland \* Topsham \* Falmouth  
 shermans.com

# HEAR ME AGAIN

L T W X D U S Z W B I R K O F H Y Z Q I  
 S K P P P T B R A I N H E A L T H A E X  
 E C B K Z N N Z Y R Z C W L H R I I V O  
 P Q D H P G Y R E V O C S I D E R R T R  
 R R V Q U M O B O E L C N S W D V E V F  
 S D G P S S E N L L E W O F J N V P Q S  
 U I B L I F E S T Y L E I W M G W E O I  
 T A K Z Q J M Q H G P W T Z N G I A J U  
 I G S I R A H L J P P N A O O U N T R F  
 N N Y T Y Q Y J Y M D I S V I A G T N C  
 N I A G A E M R A E H N R H T E Q H O H  
 I R X U N E T S I L I M E G A J X A I L  
 T A H B D Y A G N B I F V H C V G T S H  
 Z E D Q J I O R O B G O N C I B O E E W  
 T H V A U S O R D F G R O E N L M I H S  
 Z I I I O T Y L T R H E C E U W A D C S  
 D R C U N D G X O F U I K P M V A L E E  
 S B N N N W Q F W G I M Y S M B N J R F  
 N D C A X F E F X M Y Z D V O L U M E H  
 R K R Z J T E H I O O T O S C O P E I Q

- AUDIOLOGY
- BRAIN HEALTH
- COMMUNICATION
- CONVERSATIONS
- EAR DRUM
- HEARING AID
- HEAR ME AGAIN
- LIFE STYLE
- LISTEN
- NOISE
- OTOSCOPE
- RANDY ROBINSON
- REDISCOVERY
- REPEAT THAT
- SOUND
- SPEECH
- TINNITUS
- VOICE
- VOLUME
- WELLNESS

Created with TheTeachersCorner.net  
 Word Search Maker

## CRYPTOQUIP

Cryptoquip Clue: W equals P

ZYAO WAMWHA NYFGA YFOIN ZSXY  
 NMDA PQAFX UYACN CQMD F  
 PQAAG SNHFOI, SN XYFX F  
 DAFX-FOI-UQAXA?


## SUDOKU

9			6					
5	2	4					6	
6	3	8	2		1	7		
3					5			
7		2	4		6		5	
	8	5	9	7		2		
	5	6		4	2	1	9	7
		3		6	7	4	2	
2				1	9			6

CREATED BY: www.TheTeachersCorner.net

Instructions for puzzles on Page 02

See answer keys on LAST THREE PAGES



## Hear Me Again


Restoring Quality of Life

Over 20 years of experience helping people hear better & restoring quality of life. Comprehensive hearing test in-office.

Most major manufacturers represented: Signia, Oticon, Phonak, Starkey, Widex, Rexton, Resound, Unitron

Partner Hearing Health Care Provider working with the following insurances: Martins Point, Aetna, United Healthcare/AARP, Medicare Advantage Plans

In Network Hearing Care Provide for Community Health Options.



Randall A. Robinson, BC-HIS

Board Certified Hearing Instrument Professional and Owner

94 Auburn Street, Suite 202, Portland, Maine      180 Pool Street, Suite 104, Biddeford, ME 04005

RobinsonHearing@gmail.com • [www.HearMeAgain.net](http://www.HearMeAgain.net)

Contact us to see if your healthcare plan has a hearing aid benefit

Call us to schedule an appointment

207-309-9001

Se Habla Espanol

# L & L JEWELERS

B Y L V B G Q A O N B K C P L R I N G C  
 R F Z L R X J C K D C M R F E O B O Z S  
 X P E C L V E X C X R X W P L N E G F L  
 T D S E T S Y H T E M A F G N O D I C M  
 G R Z H C B R R S R E Z E E W T W A V E  
 N E W G U P P L G U T N E M E G A G N E  
 B Z P R V Z R A B P I R U V P R Z A D T  
 K R L J F A V N V L P U P I S O L D E R  
 O I Q O E T H H A E T I N A S S I O M Q  
 L O U P E N O M C S X B K J O A C F E H  
 K T Z S J R R F V D C G T M I T Z T R A  
 T G V P A U U M F T W H C Y R P G W A I  
 Q V K W O P L Y M Y O R F H N Z I M L L  
 L M I T V R P E K U U R C H A I N E D U  
 L W E F G P S H X C Q Q C C G N A T R W  
 P B U T R O X C I E T O P H W I N Y E Y  
 H M E O A R L F K R U D J N C D J E V D  
 V D N O M A I D T C E Y A M B P E D L V  
 H G O Z C X O S L S E I R E T T A B I Z  
 B P V T T R R M Z E R I A P E R R Y S V

AMETHYST  
 BATTERIES  
 BEZEL  
 CHAIN  
 CHANNEL  
 CRUCIFIX  
 DIAMOND  
 EMERALD  
 ENGAGEMENT  
 GOLD  
 LOUPE  
 MOISSANITE  
 PAVE  
 PEARLS  
 PENDANT  
 PRONG  
 REPAIR  
 RING  
 RUBY  
 SAPPHIRE  
 SILVER  
 SOLDER  
 TORCH  
 TOURMALINE  
 TWEEZERS

Created with TheTeachersCorner.net  
 Word Search Maker

## CRYPTOQUIP

Cryptoquip Clue: N equals F

GKHC FEIZ EDQE QCCBI LR HQWLMX  
 EDQE PLBB SIBLXDE NQMR KN Q  
 GIZEQLM ZKGW XZKFC: NBIIEPKKS  
 LHQG.

## SUDOKU

5				2	1	7	3	
2	7	4	6				5	1
	3	9				6	2	
		5	7	1			9	3
7				5			8	6
	9	1		3	6			
9		8	3	6		4		
						3		
3	6	7		4			1	5

See answer keys on LAST THREE PAGES

Instructions for puzzles on Page 02

For all your tourmaline desires stop by  
**L&L JEWELERS**

Since 2002

**WE PAY CASH FOR**

GOLD, SILVER,  
 PLATINUM AND DIAMONDS!

- Quick turnaround time on repairs
- All repairs done on premise
- High quality products
- Exceptional customer service
- Custom designed, change 1 week or less to 10 days or less
- Evaluations & tests performed w/no obligation to sell
- No Pressure • Watch Repairs
- Re-Purpose the jewelry you already own!

**28 Years  
 In Jewelry  
 Industry**



**YOUR FAMILY JEWELER**

**426 US Route 1 • Scarborough, ME**

**www.landljewelers.com • 207.303.3010**

**Tue-Fri 9-5 • Sat 9-4**

*a trusted local business family owned & operated*

# SELBY SHOES, ETC.

U Q T R O P K C O R O T S K F A T Y K X  
 C M J S R R T L N X U N C T R P R X B E  
 Y E P S T O O B O V Q M I N Y G F Y J W  
 D V R N E M O W M G Q P I V E L M E M N  
 Q S M A E U Q I N U S L U E N M E V J S  
 V C T V C N G S O B M B L K H P F S R H  
 A M A X V E G W V N M V N W G S P C S O  
 Y C O E K A O I G E R T L U Y R R B E E  
 R V S M B F K H N W A S N S U M S O Z S  
 V Q C D L L P E S B Q L N B E K R F L I  
 I Y N P D J B Z P A H A I X C Y E X Y F  
 V A P D F L K N H L M D N O B U P S S S  
 H N Y K K A K X J A O N S I W H P C Y I  
 P S P L M U U U O N G A Y T X L I A Z E  
 W Y V B C O F F O C Y S V H G T L A C J  
 P A R S K W Y E Q E V V U M O G S B L W  
 W J B T S C A R V E S W H H R H F I A V  
 F M W X Y H V F T Z L I T Y L A I D R I  
 Y H M Y X Z C R L L E R R E M E S N K X  
 H D J G M J Q E J N O V K S S C O G S Q

BOOTS  
 CLARKS  
 FLORSHEIM  
 FRYE  
 HAND BAGS  
 KLOGS  
 MEN  
 MERRELL  
 NEW BALANCE  
 ORTHOTICS  
 ROCKPORT  
 SANDALS  
 SCARVES  
 SHOES  
 SHOE CARE  
 SLIPPERS  
 SOCKS  
 STYLES  
 TAOS  
 UNIQUE  
 WOMEN

*Created with TheTeachersCorner.net  
 Word Search Maker*

## CRYPTOQUIP

Cryptoquip Clue: Q equals L

X T S F C E T Q Q J C V O G J C Q H L I O G B D O ,  
 D J T D Q T H F L O  
 A T S D L B V Q T S Q F B T S G E V Q X J G I O J G  
 T A A S C T B J G O S C T B J G O .

## SUDOKU

8	3	7	5			2	9	4
		9	4					3
4	2	6		3	9	5		
			1			7		
2	1	5	6		7		3	
	7				3	1		5
		2	9	5		3	1	
5				1				2
	4		3			6	5	

Instructions for puzzles on **Page 02**

See answer keys on **LAST THREE PAGES**

# Selby Shoes Etc.

Always a perfect fit.



Save Money

Styles for him & her from the highest quality shoe brands

Learn more at [www.SelbyShoesEtc.com](http://www.SelbyShoesEtc.com)



Styles for him & her

### In Store Servies

Friendly and fully knowledgeable, the Selby Shoes Etc. team is always ready to assist you with whatever you need. We love a challenge and will spend as much time as you need to find the perfect pair of shoes.

- Full range of size and widths
- Orthotic fitting and help
- Shoe adjustment for customized fit
- Suggestion for proper work-out footwear
- Fashion advice on style, color, heel height, etc.
- Special orders if necessary
- Gift Certificate in the amount of your choosing.

**MALL PLAZA, next to Dick's Sporting Goods • 220 Maine Mall Rd., South Portland, ME 04106**  
**STORE HOURS: Monday - Saturday 10am to 7pm • Closed Sunday • 207-772-4123**

# THE DUMP GUY

L A O V F B E F B O B L C J B W C Y T Q  
D A O F L R Q D D F Q U O B J Q L N U S  
Q B N F K U D Y S T B K B A F D K I M Q  
K V O O L S M F Q M R A M F N N C E G A  
C O X M I H G G R B C A M E M K L C F M  
I B A U V S K W G C L Q I I O B H A J U  
J N N T T W S B R D S R Q L A F H I T Q  
V J T R T H C E Z E F V W I E D N H R E  
U U O A R I D E F M S L L R P R D G U D  
E N B S C I C S F O R E H E L B O R C S  
G K S H T L M J V L R E R A A T A L K B  
T W I E X X E W Q I V P G S U H I G M Z  
H F D K O Z A A Z T M U E A N L P I I L  
T P M O R P Z R N I T M Q L R Z I S X C  
J M B H M X V V E O E Q K B E A D N B H  
N A E L C T X L U N U Y X A M Y G Y G R  
M D X K T B W U T O D T C I O P M H R K  
P G A A L T R U P N F K S R V M J J H G  
C B J I G O I J U E E M U P A U B R J E  
V V Q Q Q E B P C V O D M M L D D A K Z

- ATTIC
- BASEMENT
- BBB ACCREDITED
- BRUSH
- CLEAN
- CLEANOUTS
- DEMOLITION
- DUMP
- FRIENDLY
- GARAGE
- HAULING
- JUNK
- PROFESSIONAL
- PROMPT
- RELIABLE
- REMOVAL
- STRONG
- TRAILER
- TRASH
- TRUCK
- QUICK

Created with TheTeachersCorner.net Word Search Maker

## CRYPTOQUIP

Cryptoquip Clue: C equals D

FG BN LJDEEU, TWTYUL CYCA'G  
FAFUNMK LKAGKAJK LGOWJGWOK.  
Y SWKLL GDKN BFCK YG F  
AE-TFOLYAS MEAK.

## SUDOKU

2		7	4	1		3		8
			6		7	2		
	3		8	2		6		
	8		5		3	4		
				4			8	
6	9			8	1			3
5	7		3	6			2	
1		6	9		4	8	3	
	4	3	1	5				6

CREATED BY: www.theteacherscorner.net

Instructions for puzzles on Page 02

See answer keys on LAST THREE PAGES

*No job is too big or too small*



**Basement, Attic, Garage and  
Apartment Cleanouts, Boat, Camper  
and Demolition**

*Maine and Coastal New Hampshire's Premiere junk removal service  
Junk Removal is our Passion, Customer Service is our Specialty*



(207) 450-5858 • www.thedumpguy.com • Fully Insured



# HOUR GLASS COMPANY

I Z O A C E N T R A L S S X M B E S V B  
 E D C P S E T C R P S R P R D G T S B I  
 L S Q S G U C O E R E B K Y R A S W T O  
 B S M S E P V M C I K T B A L U I O N D  
 A K V E F A Z M I B Z W O I L N U D E D  
 N Z H L R T V E V V S W N X D P O N M G  
 O R U E A I U R R T U S Z O C O W I E N  
 S Q S M M O M C E H T C W I R O R W C I  
 A M E A E C B I S A S S E S Y O Q M A Z  
 E B R R D B B A L M G G K L S D S R L A  
 R O U F A W U L L L Y N I V I L M O P L  
 P G S E R A A M U H Q M W Y K O Y T E G  
 V X O H G T P N F O A R J T Y E H S R W  
 G M L J I R R A N F I F X I L G W H V N  
 A X C O M E K E J A J J L L D Y B A M U  
 U H N E H W S J P Z L O A A N H C I V A  
 T Z E T P O U E O Z N Y C U E J J A N P  
 Z X U X X H R K U Y Z D O Q I X T Q E E  
 I O B K U S T E P S S A L G R P N R G I  
 S H J N L J V B B S K J U W F O A F A Y

CENTRAL  
 COMMERCIAL  
 DOORS  
 ENCLOSURES  
 FAMILY OWNED  
 FRAMED  
 FRAMELESS  
 FRIENDLY  
 FULL SERVICE  
 GLASS  
 GLAZING  
 INSTALLATION  
 LOCAL  
 PATIO  
 QUALITY  
 REASONABLE  
 REPAIR  
 REPLACEMENT  
 SHOWER  
 SOUTHERN  
 STORM WINDOWS  
 VINYL  
 WINDOWS

Created with TheTeachersCorner.net  
 Word Search Maker

## CRYPTOQUOTE

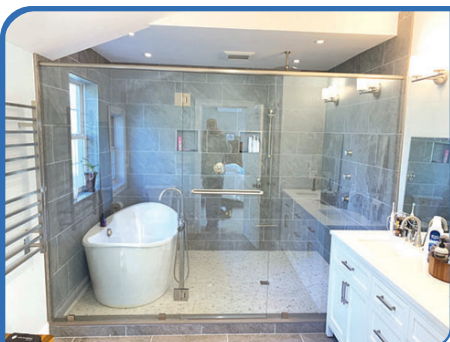
DEUL EOD LEC QDDZDQ WLD  
 IDS-AM YI GDEY WLD NVWWDCW  
 WVZD NMY NDCWEJ ULDDY.  
 -SEJWDY CUMWW

## SUDOKU

	3			2	9		1	
2			8	4			5	9
1	8			3				2
	4	3	1		2	9	8	
			4		7	3	2	
6	2		9		3			
5	1		2	9	8		7	3
8			3				2	
	7						8	9

Instructions for puzzles on Page 02

See answer keys on LAST THREE PAGES



**GO BIG OR GO HOME!**  
 Glass & Shower Enclosures of All Types. If You Can Dream It, We Can Do It!  
**GLASS THAT WON'T BREAK - YOUR BUDGET!**



Check Us Out On Facebook! **775-9915**

Office/Showroom: 619 Main St. (Rte. 1) South Portland

Learn a bit more at:  
[www.HourGlassCompany.com](http://www.HourGlassCompany.com)

"Make HOUR Glass Company  
 Your Glass Company!"

CUSTOM SHOWER ENCLOSURES

AND SHOWER DOORS OUR SPECIALTY!

# WALLY J. STAPLES BUILDERS INC.

Z V C O F A Z X D C S E G A R A G N X F  
 F K W T Y E T S E M O H M O T S U C F K  
 C W U P Y M S W R O T O U F P B P G J V  
 H Z U U O Q K N Y D D N H M E X O X W S  
 S T H F I F Z T R E R B G O D N R T H R  
 K Y R T E N I B A C M O T S U C C E N B  
 C X I T C S S N O I T I D D A M H U Z T  
 E O W A O C U S N O I T A V O N E R R I  
 D Q S R A E Y E N O Y T R I H T S T G R  
 Z G W D G B U H P F H I F Q L U O X W P  
 B E S D H J N S A N F E O W W E N U C T  
 E N I A M T S A O C D I M G E A Z E V A  
 U N V B I V V A K Q F I E L T U Z Y L S  
 E N I N E T E E N N I N E T Y T H R E E  
 S T N E M E V O R P M I R O I R E T X E  
 S N G I S E D M D L I U B U E W M F R N  
 N O I T A V O N E R M O O R H T A B Y D  
 K I T C H E N R E N O V A T I O N P V J  
 S P I N T E R I O R D E S I G N E R M D  
 C C R A F T S M A N S H I P N Y X V W U

- ADDITIONS
- BATHROOM RENOVATION
- BUILD
- CRAFTSMANSHIP
- CUSTOM CABINETS
- CUSTOM HOMES
- DECKS
- DESIGN
- NINETEEN NINETY THREE
- EXTERIOR IMPROVEMENTS
- GARAGES
- INTERIOR DESIGNER
- KITCHEN RENOVATION
- MIDCOAST MAINE
- PORCHES
- RENOVATIONS
- THIRTY ONE YEARS

Created with TheTeachersCorner.net Word Search Maker

## CRYPTOQUIP

Cryptoquip Clue: X equals H

NXB TDJWZNBO WODPOMJJBO XMS  
 M AMS TDZPX, ED XRE VDOL  
 AZSSRBE VBOB VMOYRYP XRJ ND  
 ENDW XMTLRYP.

## SUDOKU

			4	2	9	1	
			1	8	6	4	
1			8		7		3
3	2	9	1	6	4	5	8
		4	7	2	3	1	6
9	3						7
		7		4	8	6	9
4	6			7	9		3

CREATED ON: www.TheTeacherCorner.net

See answer keys on LAST THREE PAGES

Instructions for puzzles on Page 02

FOR BUILDING & HOME IMPROVEMENTS SINCE 1993



# WALLY J STAPLES INC. BUILDERS

207-725-7700  
wjsbuilders.com

*Design to BUILD*

21 GREENWOOD RD. BRUNSWICK, ME

NEW HOMES | ADDITIONS | REMODELING | GARAGES  
DECKS | WINDOWS | ROOFING | SIDING

LAND & BUILDING PACKAGES AVAILABLE



Celebrating 31 years 1993-2024

# PAWZ & CLAWZ PETZ

W O U R A L L O C N M U S K E S F Y L C  
 U B I X A D C D R L Z D Y X J B K T C Q  
 C E Y M N J K G X O J S V V K Q P E A O  
 I X G M W C D R Z F L D B M N Z R D B J  
 Z T L W C T H N G J U G Z R C D M K E W  
 M C M E G R T N S E S J O D D R A X S T  
 Z E J U F X F J R E U B D V F E U K T L  
 S F O S A H C I H X A H E M T E U A F O  
 J F A W P P B S O R R I H N S O A A R F  
 H R I O G N A Q K X B H J J W P I T I E  
 Z G O L D E N R E T R I E V E R T E E N  
 V D Z P L J P M A I N E C O O N X L N X  
 S B D M Q E K G U K I D Q M U C P P D S  
 T Z W B U D W K Q B X P J W H S U Z J E  
 A J U G C Z S N E T T I K L B G Z F M I  
 E G Y Y S C C I E W B Z Z C S Y O T P P  
 R Z M R J Z W A L C O C K A P O O Y P P  
 T D Y Y T H B F F O W U L A T W W P R U  
 P L Q C M P A W Z Z J V Y H V L A I L P  
 Q Z W W H M A N G L R W J K O A A O W E

- BARK
- BEST FRIEND
- CLAWZ
- COCKAPOO
- COLLAR
- GOLDEN RETRIEVER
- KITTENS
- LEASHES
- MAINE COON
- MEOW
- PAWZ
- PUGS
- PUPPIES
- TOYS
- TREATS

Created with TheTeachersCorner.net  
 Word Search Maker

## CRYPTOQUOTE

ZIZTE LHZNZ SV KAZ FGHIZTDZ,  
 ZIZG KAZ KHGHZDK UHKUZ DGSC  
 NTEKQU, RQKKZTD DSRZASC.  
 - K.Q. MOTTSG

## SUDOKU

8			3	7	6			4
9		6		1	4	7	8	
			9	8				2
1					7	4	9	
6		3	4		9	1	2	
	4	9			1			
3		1	7	4				
	6		5	9			4	1
			1			2	7	9

CREATED ON www.TheTeachersCorner.net

Instructions for puzzles on Page 02

See answer keys on LAST THREE PAGES



## Pawz & Clawz Petz

*You may enter alone but will  
 leave with a loyal friend!*

**GO HOME WITH A NEW PUPPY OR KITTEN!**

Come in, call or go online for current availability

[Pawzclawzpetz.com](http://Pawzclawzpetz.com)



**Open Tuesday - Sunday  
 11am - 5pm**

find us on facebook

889 Roosevelt Tr., Route 302, Windham • 892-5366

Large selection of quality foods,  
 gourmet treats, apparel, collars, leads,  
 bowls, boutique items, shampoos,  
 toys, pet first aid, & MUCH MORE!

# MAINE TRUST FOR LOCAL NEWS - SOUTHERN MAINE WEEKLIES

A R M F E C A L P T E K R A M E G Q B R  
 T J A O T P L S O O I W F R N B M C O I  
 W K I R T C R C K G W Q C W U B Q S B U  
 R W N L E O R A P N R E H T R O N O B T  
 K D E O Z G P R C O U R I E R G O U J L  
 D B T C A T I B Q B S N S G Z O P T A O  
 S Q R A G S J O F Y W W K I C Y J H M P  
 O R U L R A Z R Q C Y Z C A O R A E E O  
 P Y S N E O F O A M M Z S A S B A R R R  
 O W T E T C Y U R U Y D E K H T B N I T  
 C W W W S D O G T A R S B Y F W W X C L  
 A I U S I I Q H M O V D E Y O N U T A A  
 P H K B G M K L F K F D S R R L V X N N  
 E L A K E S R E G I O N W E E K L Y J D  
 S K L Y R L D A W R Z G Z H C X E T O P  
 E Z E O C D Z D S C L F A O A N O R U L  
 N S O X I N Q E C H I J T J S F B O R Q  
 T Y W B O A Z R N E N I A M T Z O I N O  
 R T S O P K N U B E N N E K E E I Z A T  
 Y U E X Z H W E E K L I E S R U C M L I

AMERICAN JOURNAL  
 BIDDEFORD SACO OOB  
 COURIER  
 FORECASTER  
 FOR LOCAL NEWS  
 KENNEBUNK POST  
 LAKES REGION WEEKLY  
 MAINE  
 MAINE TRUST  
 MARKETPLACE  
 MIDCOAST GO  
 NORTHERN  
 PORTLAND  
 REGISTER GAZETTE  
 SCARBOROUGH LEADER  
 SOPO CAPE SENTRY  
 SOUTHERN  
 WEEKLIES

*Created with TheTeachersCorner.net  
 Word Search Maker*

## CRYPTOQUIP

Cryptoquip Clue: X equals 0

T HFUA NAQ SXQGFZJ YKX DBTD  
 TODAY XKD VFHAZD VOAZAV  
 DBXKJBD XS DBAGVAHUAV TV  
 NTQDZAQV FZ GFGA.

## SUDOKU

	6		9		5		
1		3	7	8			4
		8	6	5	4	1	
6	7	1		4	8	2	9
	4	9	3			7	
5		2	1				4
	1		8		9	4	5
	9				5		1
		5	4	6			2

See answer keys on **LAST THREE PAGES**

Instructions for puzzles on **Page 02**



## WHAT'S THE SCOOP?

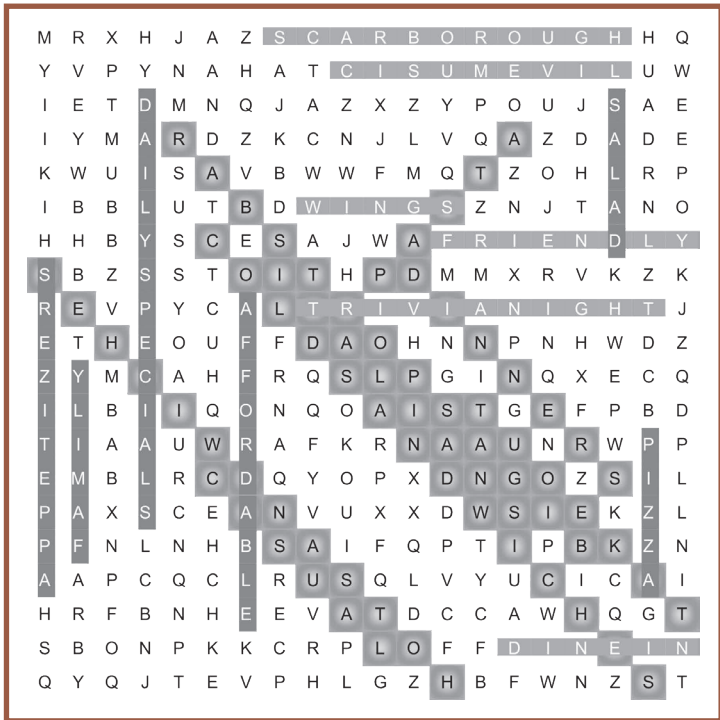
Find out where to eat, drink  
 and have fun around town.

**Southern Maine  
 Weeklies**

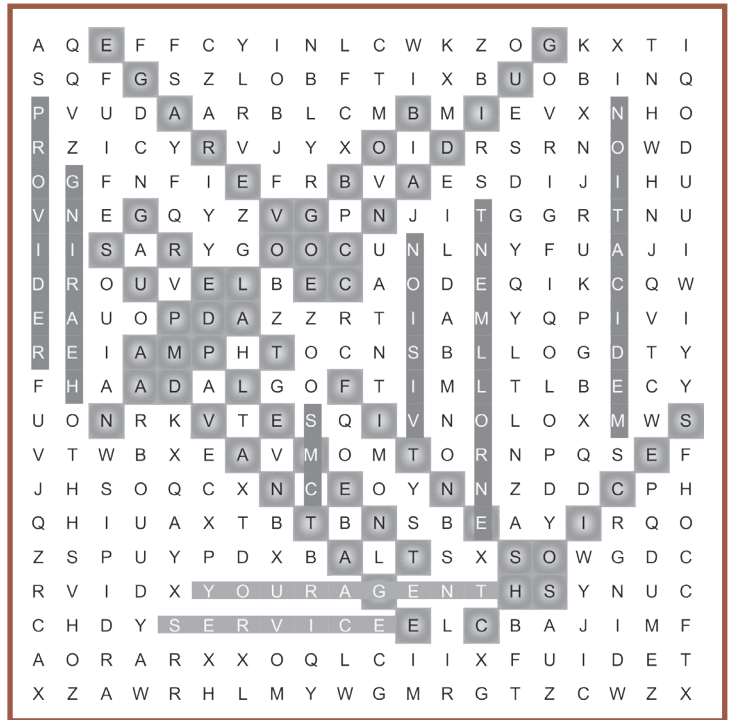
Maine Trust for Local  
 News Publications

In print weekly and always online at [pressherald.com](http://pressherald.com).

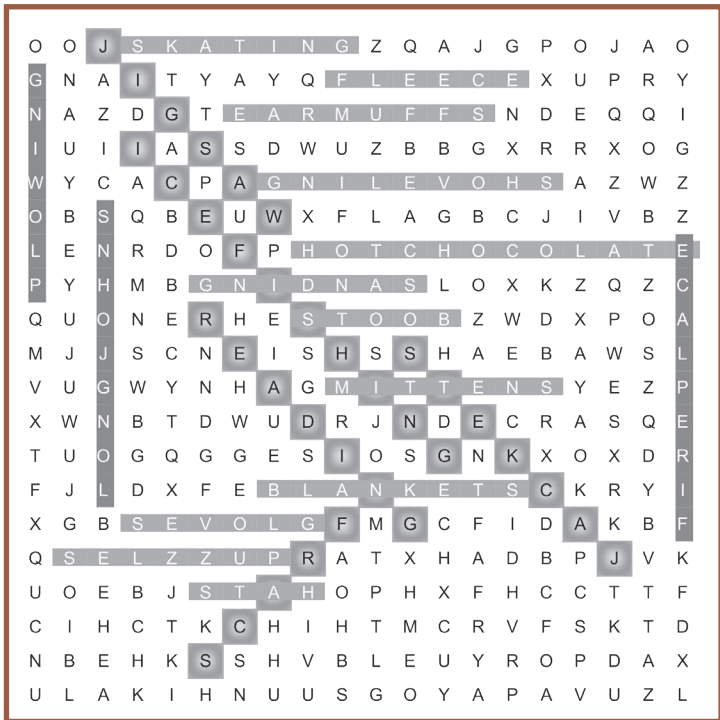
PATS PIZZA SCARBOROUGH | page 2



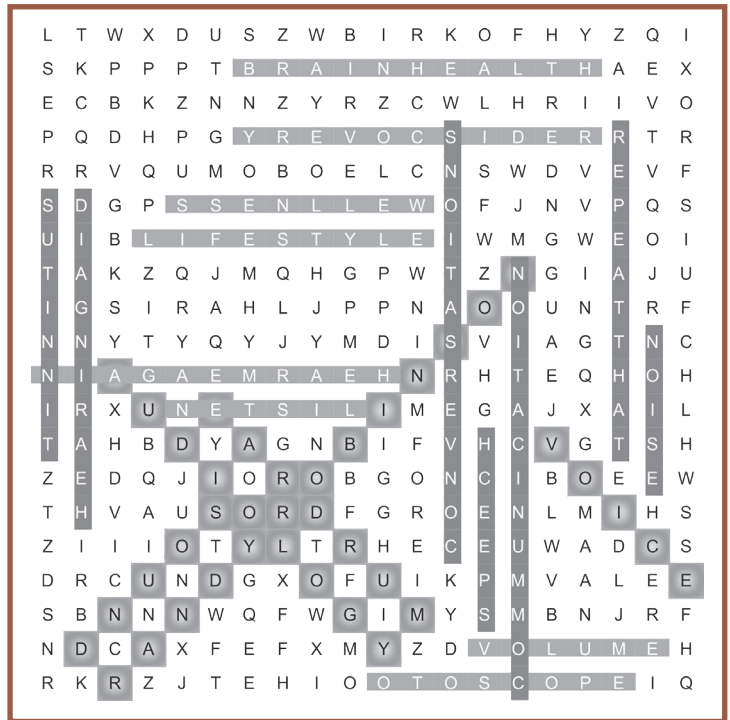
YOUR MEDICARE! | page 3



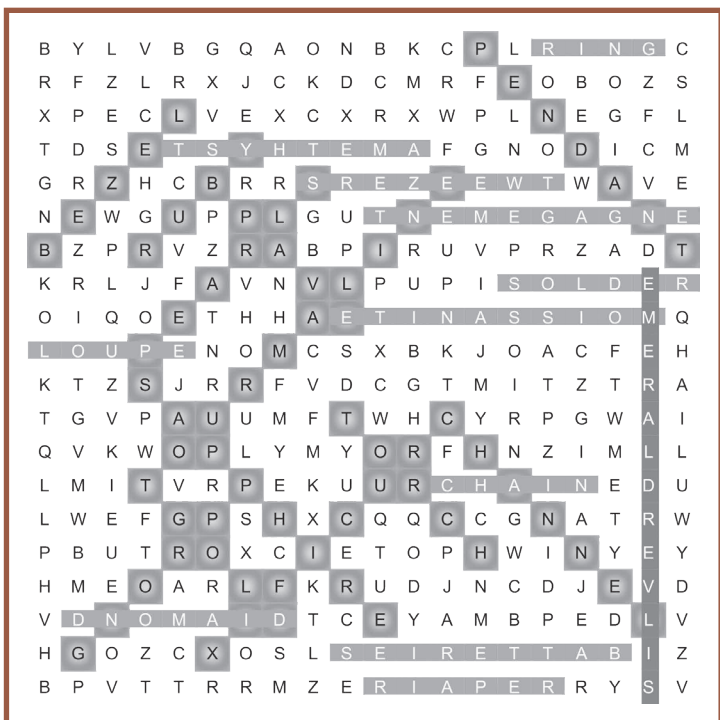
SHERMAN'S BOOK SHOPS | page 4



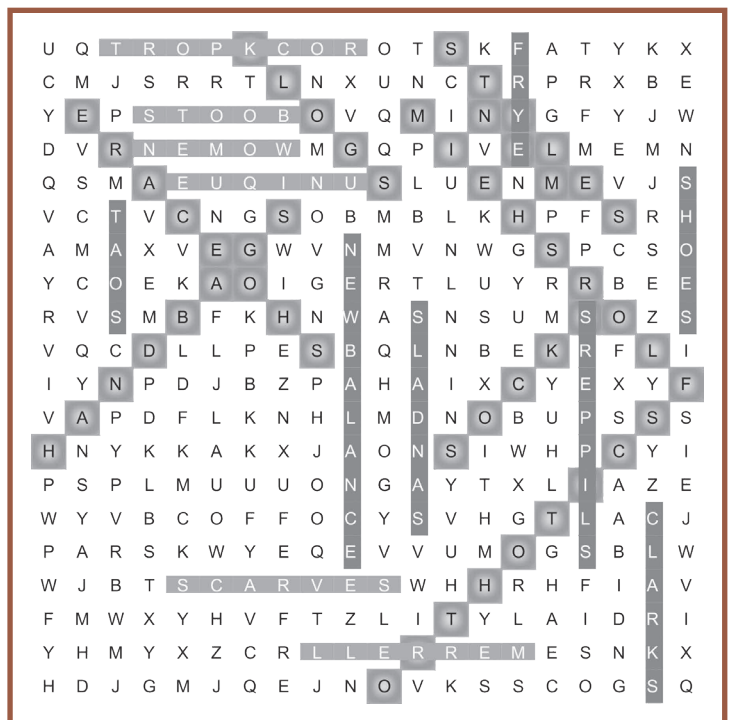
HEAR ME AGAIN | page 5



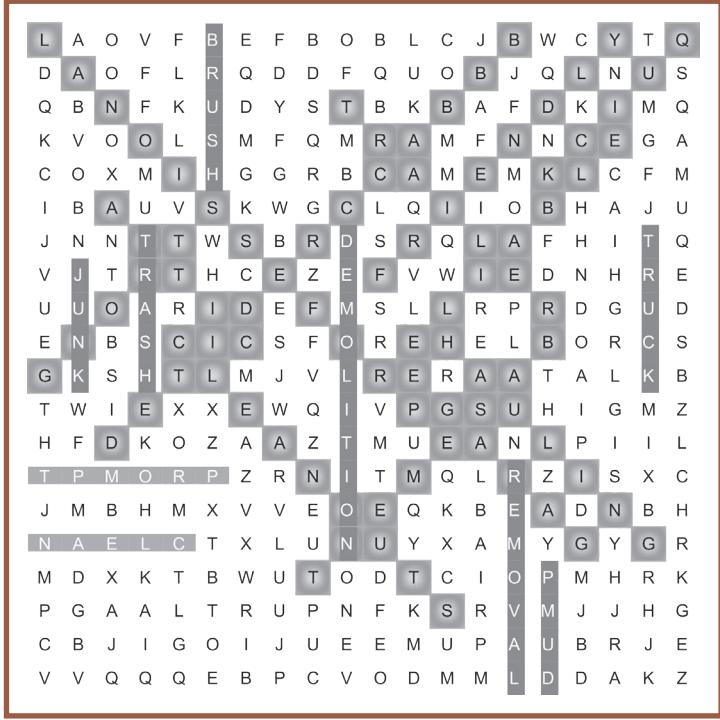
L & L JEWELERS | page 6



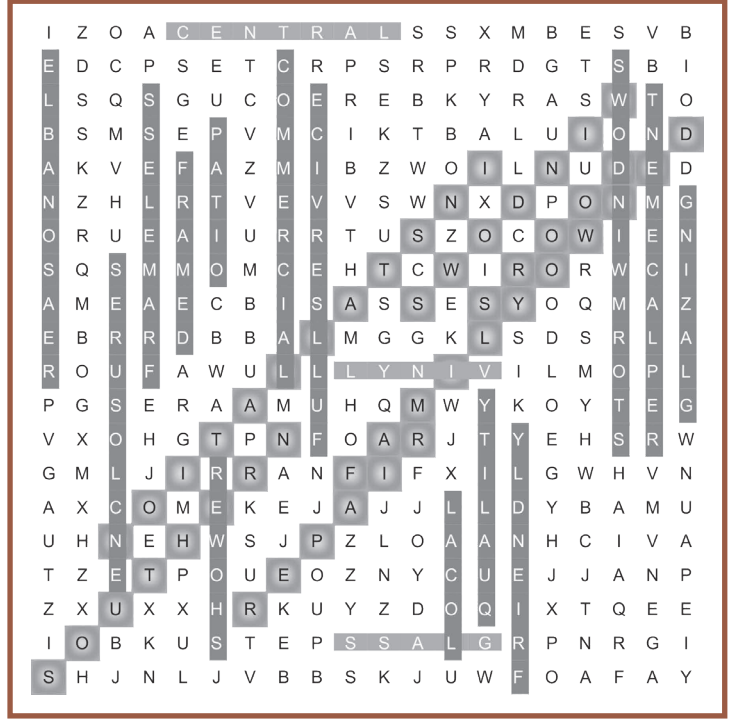
SELBY SHOES, ETC. | page 7



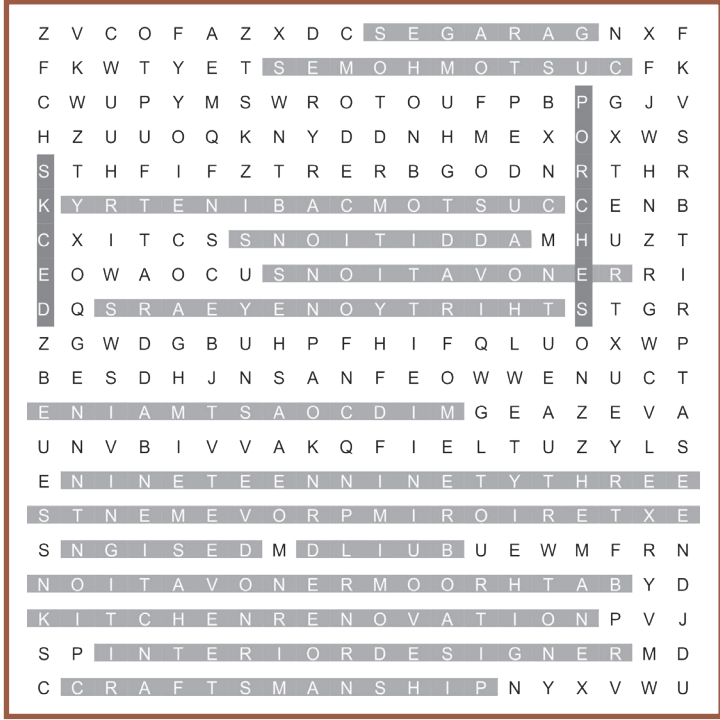
THE DUMP GUY | page 8



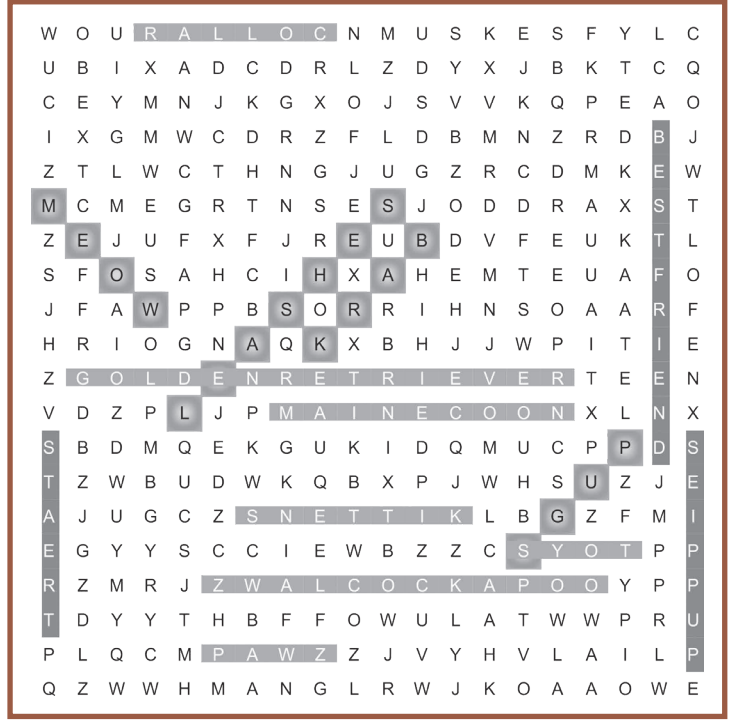
HOURLASS COMPANY | page 9



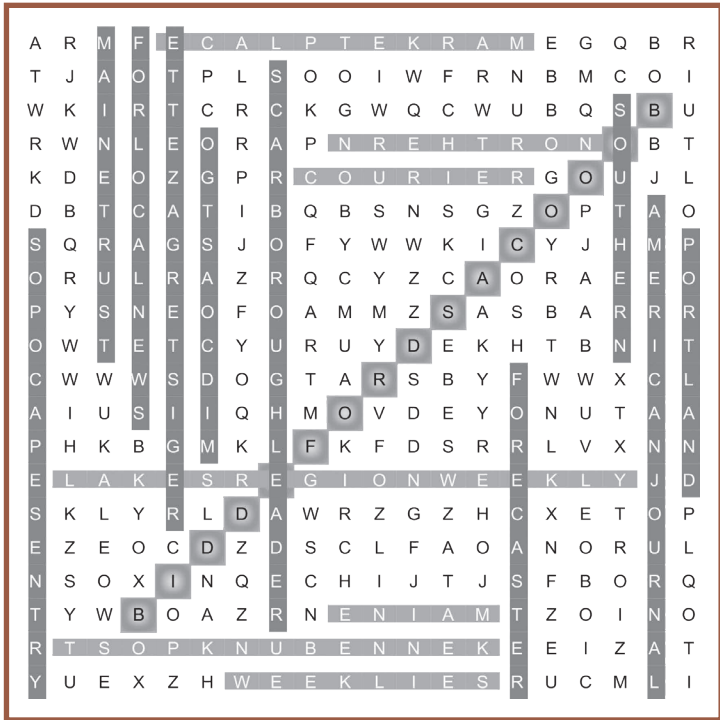
WALLY J. STAPLES BUILDERS INC. | page 10



PAWZ & CLAWZ PETZ | page 11



METLN - SOUTHERN MAINE WEEKLIES | page 12



**SUDOKU PAGE 2**

4	9	3	8	6	2	5	7	1
5	6	7	4	3	1	8	9	2
1	2	8	5	7	9	6	3	4
7	4	1	3	2	6	9	5	8
9	8	2	1	5	7	3	4	6
3	5	6	9	4	8	2	1	7
8	3	5	2	1	4	7	6	9
2	7	4	6	9	3	1	8	5
6	1	9	7	8	5	4	2	3

**SUDOKU PAGE 3**

2	9	5	1	8	3	6	7	4
8	1	4	9	7	6	3	5	2
3	7	6	5	4	2	1	9	8
9	6	2	3	5	1	8	4	7
4	3	1	7	2	8	9	6	5
7	5	8	6	9	4	2	1	3
6	2	3	4	1	5	7	8	9
1	4	7	8	3	9	5	2	6
5	8	9	2	6	7	4	3	1

**SUDOKU PAGE 4**

6	5	7	9	1	4	3	2	8
2	8	9	6	5	3	4	7	1
3	1	4	7	2	8	9	5	6
8	6	5	4	7	2	1	9	3
4	3	1	5	8	9	2	6	7
9	7	2	3	6	1	8	4	5
5	4	3	8	9	6	7	1	2
7	2	8	1	4	5	6	3	9
1	9	6	2	3	7	5	8	4

**SUDOKU PAGE 5**

9	7	1	6	5	4	3	8	2
5	2	4	7	3	8	6	1	9
6	3	8	2	9	1	7	4	5
3	6	9	1	2	5	8	7	4
7	1	2	4	8	6	9	5	3
4	8	5	9	7	3	2	6	1
8	5	6	3	4	2	1	9	7
1	9	3	5	6	7	4	2	8
2	4	7	8	1	9	5	3	6

**SUDOKU PAGE 6**

5	8	6	4	2	1	7	3	9
2	7	4	6	9	3	8	5	1
1	3	9	5	8	7	6	2	4
6	4	5	7	1	8	2	9	3
7	2	3	9	5	4	1	8	6
8	9	1	2	3	6	5	4	7
9	1	8	3	6	5	4	7	2
4	5	2	1	7	9	3	6	8
3	6	7	8	4	2	9	1	5

**SUDOKU PAGE 7**

8	3	7	5	6	1	2	9	4
1	5	9	4	7	2	8	6	3
4	2	6	8	3	9	5	7	1
3	9	8	1	4	5	7	2	6
2	1	5	6	8	7	4	3	9
6	7	4	2	9	3	1	8	5
7	6	2	9	5	4	3	1	8
5	8	3	7	1	6	9	4	2
9	4	1	3	2	8	6	5	7

**SUDOKU PAGE 8**

2	6	7	4	1	9	3	5	8
4	5	8	6	3	7	2	1	9
9	3	1	8	2	5	6	4	7
7	8	2	5	9	3	4	6	1
3	1	5	7	4	6	9	8	2
6	9	4	2	8	1	5	7	3
5	7	9	3	6	8	1	2	4
1	2	6	9	7	4	8	3	5
8	4	3	1	5	2	7	9	6

**SUDOKU PAGE 9**

4	3	5	6	2	9	7	1	8
2	6	7	8	4	1	5	3	9
1	8	9	7	3	5	4	6	2
7	4	3	1	6	2	9	8	5
9	5	1	4	8	7	3	2	6
6	2	8	9	5	3	1	4	7
5	1	4	2	9	8	6	7	3
8	9	6	3	7	4	2	5	1
3	7	2	5	1	6	8	9	4

**SUDOKU PAGE 10**

8	3	5	4	6	2	9	1	7
6	4	1	5	9	7	3	8	2
7	2	9	1	3	8	6	4	5
1	9	6	8	4	5	7	2	3
3	7	2	9	1	6	4	5	8
5	8	4	7	2	3	1	9	6
9	5	3	6	8	1	2	7	4
2	1	7	3	5	4	8	6	9
4	6	8	2	7	9	5	3	1

**SUDOKU PAGE 11**

8	2	5	3	7	6	9	1	4
9	3	6	2	1	4	7	8	5
4	1	7	9	8	5	6	3	2
1	5	8	6	2	7	4	9	3
6	7	3	4	5	9	1	2	8
2	4	9	8	3	1	5	6	7
3	9	1	7	4	2	8	5	6
7	6	2	5	9	8	3	4	1
5	8	4	1	6	3	2	7	9

**SUDOKU PAGE 12**

7	6	4	9	1	3	5	2	8
1	5	3	7	8	2	6	4	9
9	2	8	6	5	4	1	3	7
6	7	1	5	4	8	2	9	3
8	4	9	3	2	6	7	1	5
5	3	2	1	9	7	8	6	4
2	1	7	8	3	9	4	5	6
4	9	6	2	7	5	3	8	1
3	8	5	4	6	1	9	7	2



**CRYPTOQUIP ANSWER KEY**

**PAGE 5** | When people shake hands with some great chefs from a Greek island, is that a meat-and-Crete?

**PAGE 6** | Computer that Apple is making that will delight fans of a certain rock group: Fleetwood iMac.

**PAGE 7** | Wary of all household insects, that lady is particularly careful when she approaches roaches.

**PAGE 8** | At my school, pupils didn't analyze sentence structure. I guess they made it a no-parsing zone.

**PAGE 10** | The computer programmer had a bad cough, so his work buddies were warning him to stop hacking.

**PAGE 12** | A live performing duo that acted out silent scenes thought of themselves as partners in mime.

**CRYPTOQUOTE ANSWER KEY**

**PAGE 2** | Write it on your heart that every day is the best day in the year. - Ralph Waldo Emerson

**PAGE 3** | One cool judgment is worth a thousand hasty counsels. The thing to do is to supply light and not heat. - Woodrow Wilson

**PAGE 4** | Accept what people offer. Drink their milkshakes. Take their love. - Wally Lamb

**PAGE 9** | Each age has deemed the new-born year the fittest time for festal cheer. - Walter Scott

**PAGE 11** | Every piece of the universe, even the tiniest little snow crystal, matters somehow. - T.A. Barron

*Playing With Words Since 1886*

# SHERMAN'S

MAINE COAST BOOK SHOPS

*Maine's Oldest Bookstore*

Freeport \* Damariscotta

Bar Harbor \* Boothbay Harbor

Windham \* Portland's Old Port

Rockland \* Topsham \* Falmouth

[shermans.com](http://shermans.com)

*Open 7 Days a Week*

*For Your Reading & Browsing Pleasure*